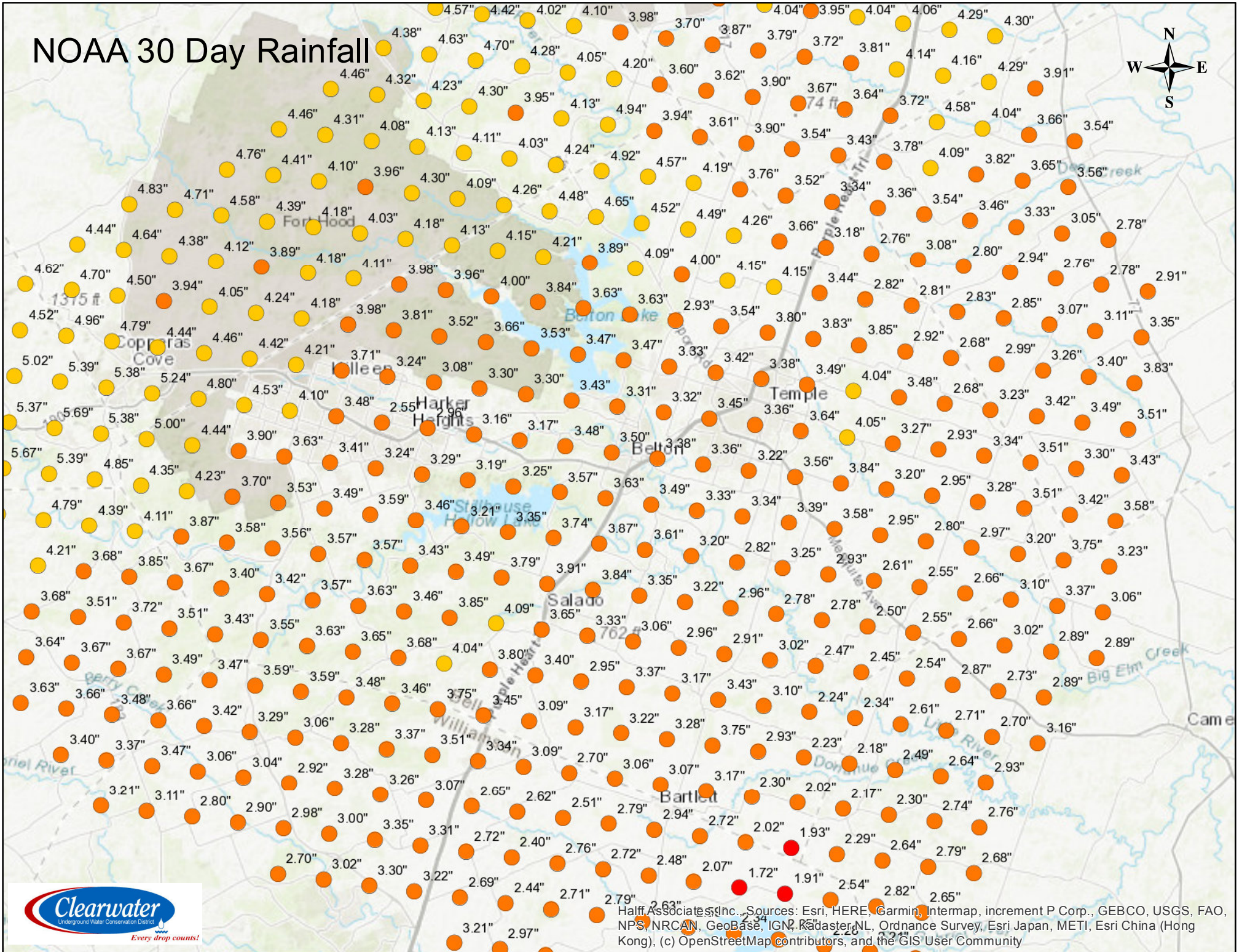


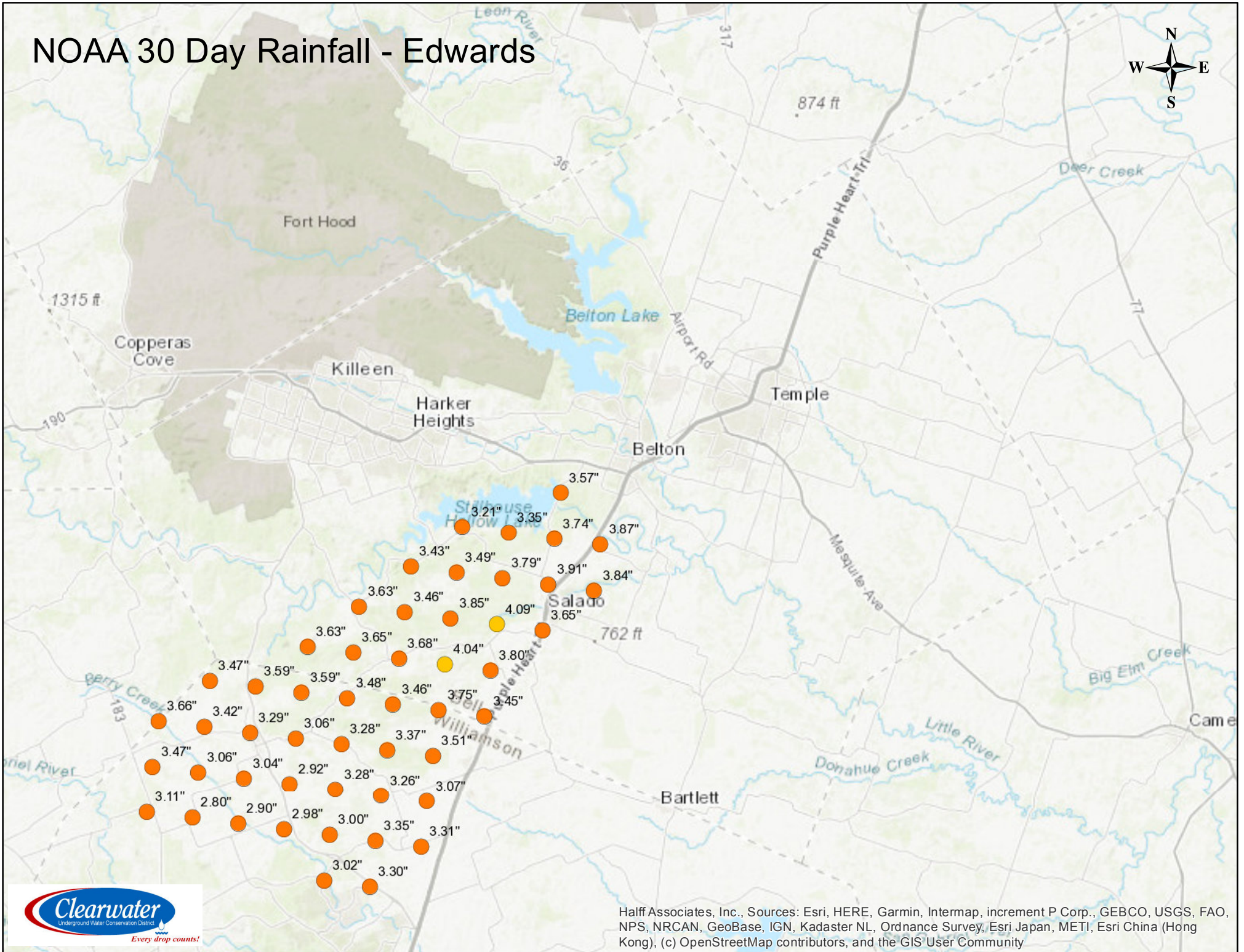
Rainfall/Drought Conditions

NOAA 30 Day Rainfall



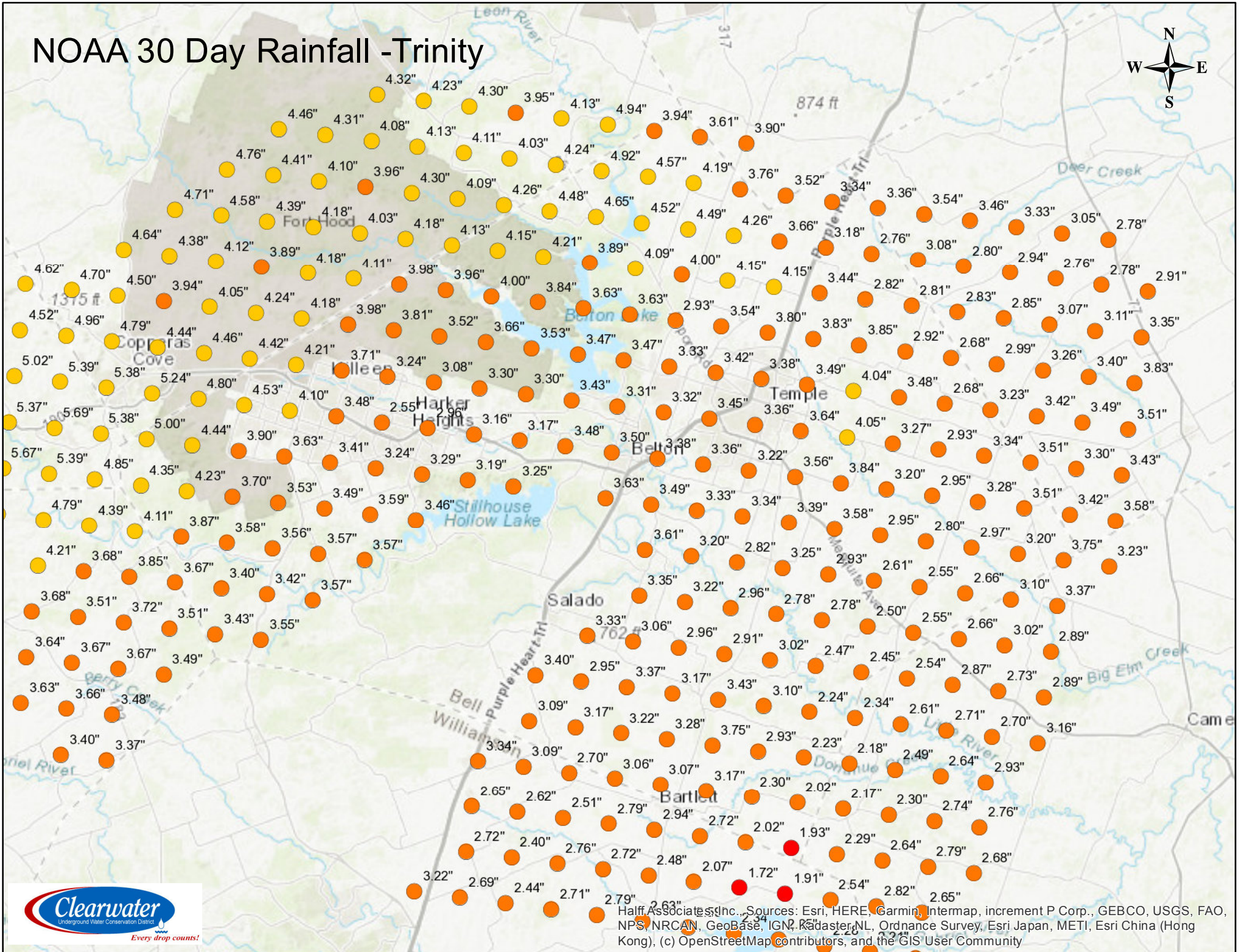
Half Associates, Inc., Sources: Esri, HERE, Garmin, Intermap, increment P Corp., GEBCO, USGS, FAO, NPS, NRCAN, GeoBase, IGN, Kadaster NL, Ordnance Survey, Esri Japan, METI, Esri China (Hong Kong), (c) OpenStreetMap contributors, and the GIS User Community

NOAA 30 Day Rainfall - Edwards



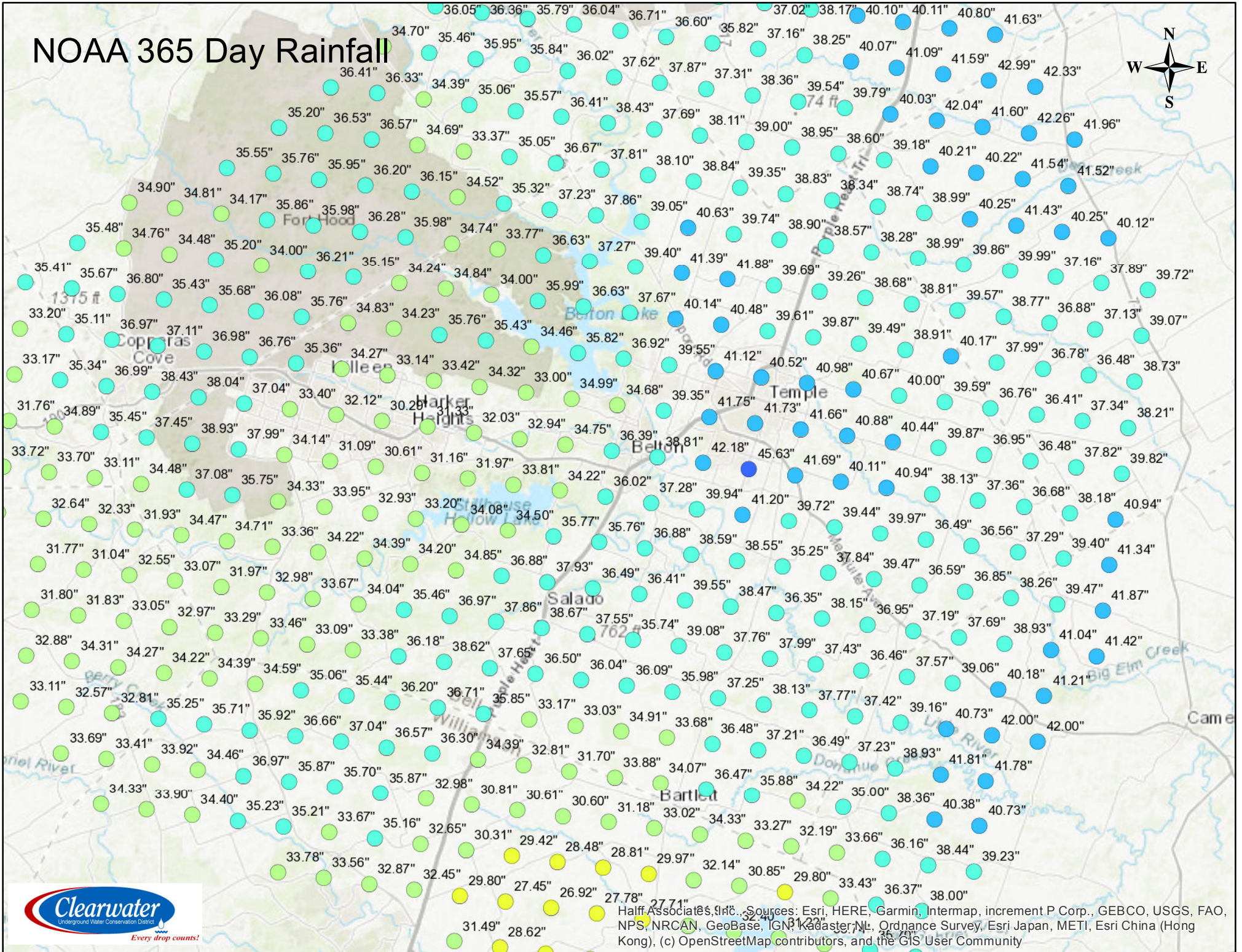
Half Associates, Inc., Sources: Esri, HERE, Garmin, Intermap, increment P Corp., GEBCO, USGS, FAO, NPS, NRCAN, GeoBase, IGN, Kadaster NL, Ordnance Survey, Esri Japan, METI, Esri China (Hong Kong), (c) OpenStreetMap contributors, and the GIS User Community

NOAA 30 Day Rainfall -Trinity



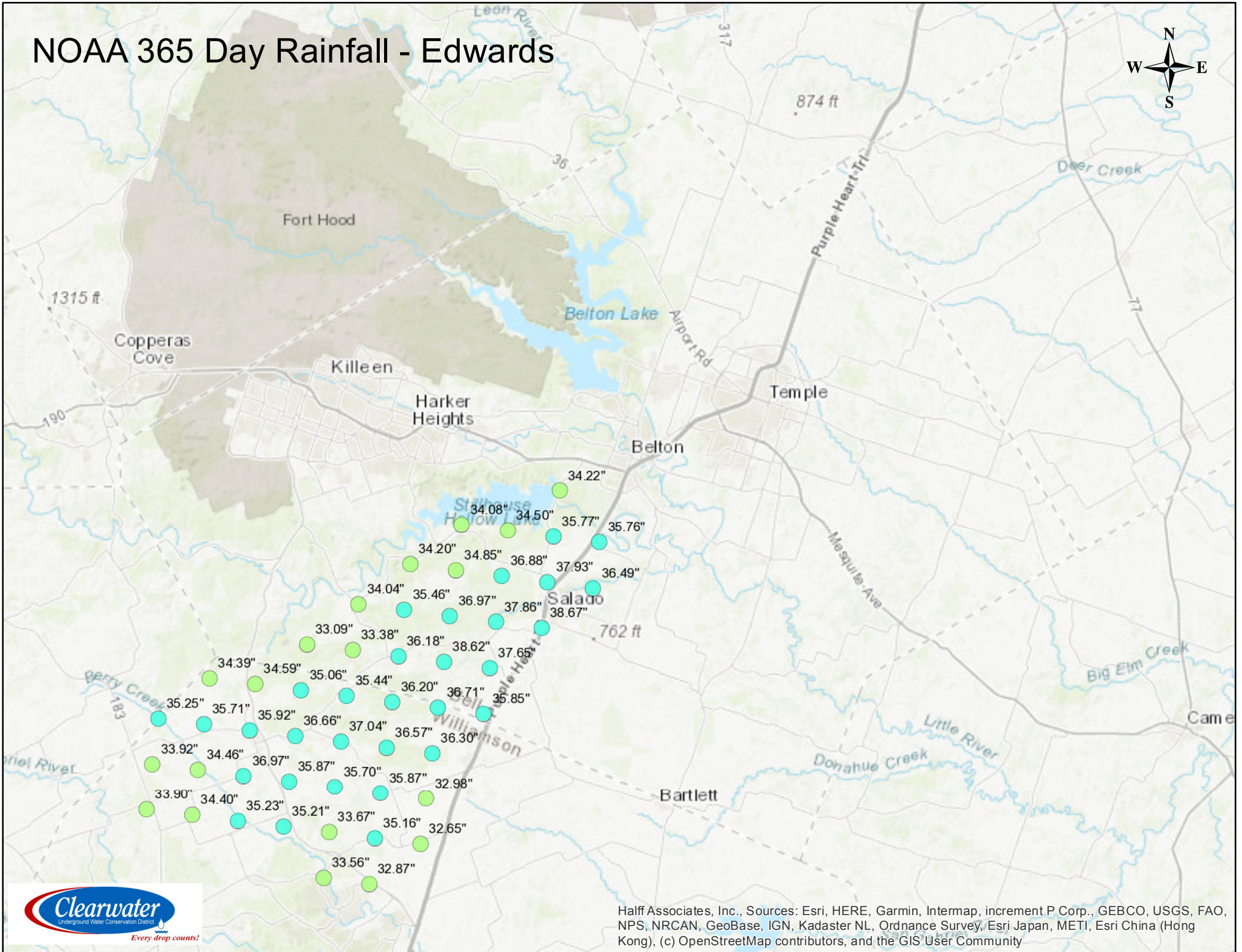
Half Associates, Inc., Sources: Esri, HERE, Garmin, Intermap, increment P Corp., GEBCO, USGS, FAO, NPS, NRCAN, GeoBase, IGN, Kadaster NL, Ordnance Survey, Esri Japan, METI, Esri China (Hong Kong), (c) OpenStreetMap contributors, and the GIS User Community

NOAA 365 Day Rainfall



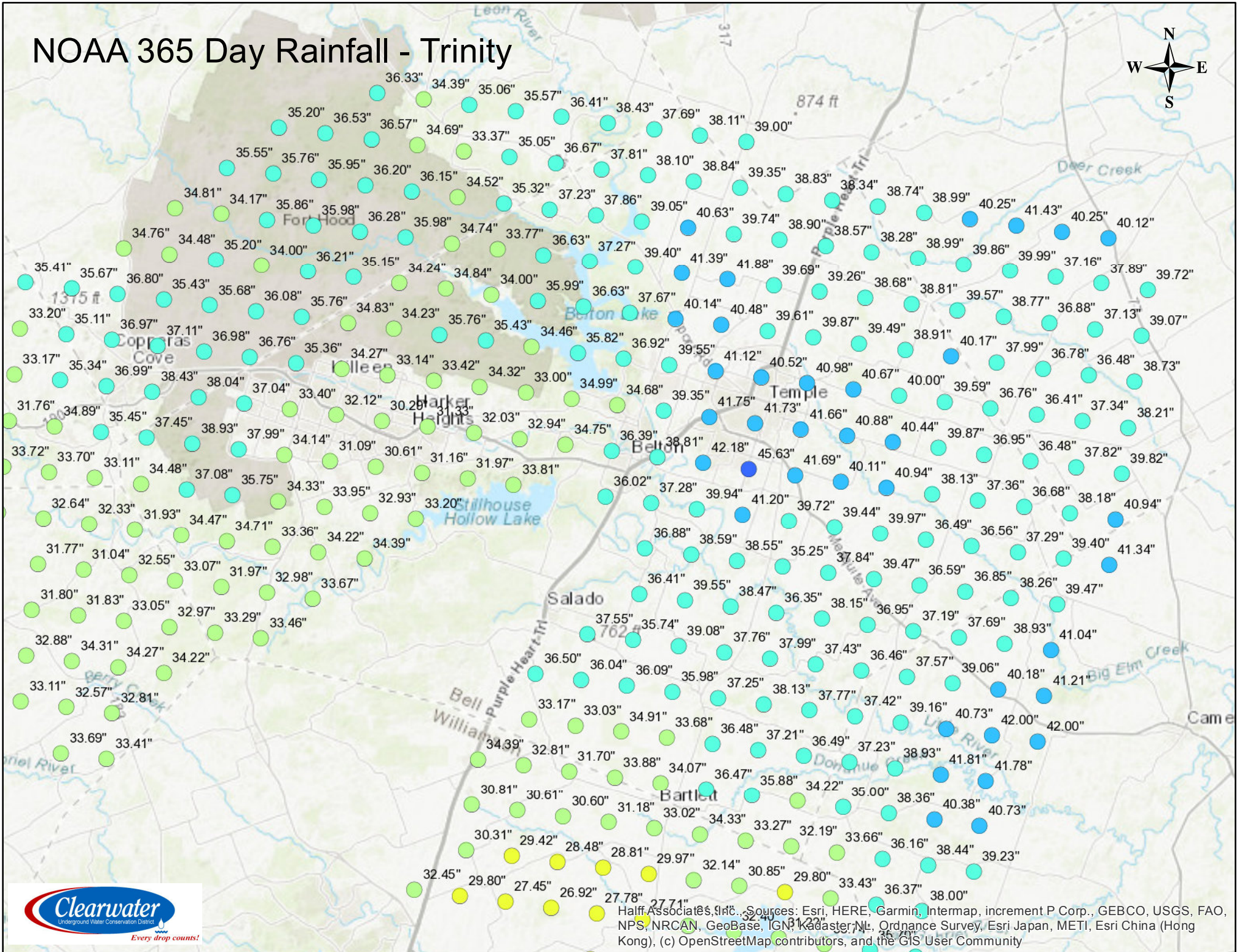
Half Associates, Inc. Sources: Esri, HERE, Garmin, Intermap, increment P Corp., GEBCO, USGS, FAO, NPS, NRCAN, GeoBase, IGN, Kadaster NL, Ordnance Survey, Esri Japan, METI, Esri China (Hong Kong), (c) OpenStreetMap contributors, and the GIS User Community

NOAA 365 Day Rainfall - Edwards



Half Associates, Inc., Sources: Esri, HERE, Garmin, Intermap, increment P Corp., GEBCO, USGS, FAO, NPS, NRCAN, GeoBase, IGN, Kadaster NL, Ordnance Survey, Esri Japan, METI, Esri China (Hong Kong), (c) OpenStreetMap contributors, and the GIS User Community

NOAA 365 Day Rainfall - Trinity



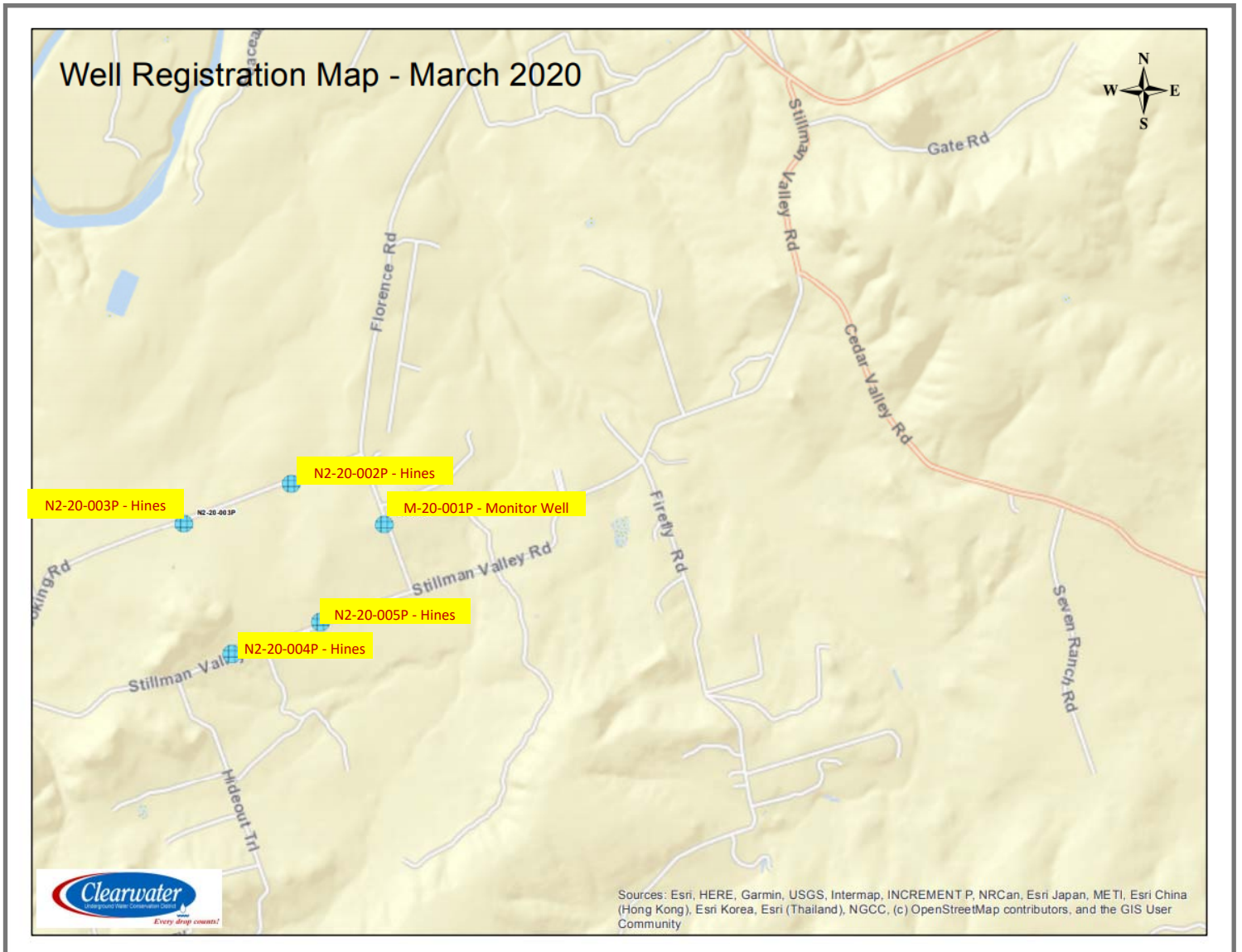
Half Associates, Inc. Sources: Esri, HERE, Garmin, Intermap, increment P Corp., GEBCO, USGS, FAO, NPS, NRCAN, GeoBase, IGN, Kadaster NL, Ordnance Survey, Esri Japan, METI, Esri China (Hong Kong), (c) OpenStreetMap contributors, and the GIS User Community

Well Registrations

Well Registrations – March 2020

Well Registration Totals								
Year	Exempt Wells		Non-Exempt Wells			Monitor Wells		Total
	Grandfathered	New	Grandfathered	Class 1	Class 2	Water	Envr	
2002 - 2019	4352	1013	104	33	52	25	121	5700
2020 - Jan	4	1	0	0	0	0	0	5
Feb	0	4	0	1	1	0	0	6
Mar	0	0	0	0	4	1	0	5
Apr								0
May								0
June								0
July								0
Aug								0
Sept								0
Oct								0
Nov								0
Dec								0
Total 2020	4	5	0	1	5	1	0	16
Totals	4356	1018	104	34	57	26	121	5716
Adjustments								
Adjustment Type	Exempt Wells		Non-Exempt Wells			Monitor Wells		Total
	Grandfathered	New	Grandfathered	Class 1	Class 2	Water	Envr	
2002-Present	4356	1018	104	34	57	26	121	5716
Never Drilled	N/A	-27	N/A	-3	-4	0	-1	-35
Plugged	-203	-42	-18	-2	-1	-2	-53	-321
Totals	4153	949	86	29	52	24	67	5360

Proposed Wells for March 2020



<u>Well #</u>	<u>Owner</u>	<u>Address</u>	<u>City</u>	<u>Aquifer</u>	<u>Depth</u>	<u>Use</u>	<u>Status</u>
M-20-001P	Hines Monitor Well	601 Lake Air Drive	Waco	Lower Trinity	?	Monitoring	Proposed
N2-20-002P	Hines Texas, LLC	601 Lake Air Drive	Waco	Lower Trinity	720'	Domestic	Proposed
N2-20-003P	Hines Texas, LLC	601 Lake Air Drive	Waco	Lower Trinity	740'	Domestic	Proposed
N2-20-004P	Hines Texas, LLC	601 Lake Air Drive	Waco	Lower Trinity	760'	Domestic	Proposed
N2-20-005P	Hines Texas, LLC	601 Lake Air Drive	Waco	Lower Trinity	720'	Domestic	Proposed